



LOCATION OF OUTREACH EVENTS

Tuesday January 22, 2019
from 4:30 to 6:30 p.m.

El Paso Community Foundation
333 N Oregon Street
El Paso, TX 79901

Thursday January 24, 2019
from 5:00 to 7:00 p.m.

Ysleta ISD Central Office
9600 Simms Drive
El Paso, TX 79925

THANK YOU

YOUR PARTICIPATION IS VALUED & APPRECIATED

Los eventos se realizarán en inglés. Si el inglés no es su primer idioma y tiene dificultades para comunicarse eficientemente en inglés, se proporcionará servicio de interpretación en español. Si usted tiene una discapacidad y necesita asistencia, se pueden hacer arreglos especiales para cubrir la mayoría de las necesidades. Si necesita arreglos distintos para asistir a los eventos, por favor comuníquese con la directora de información pública de TxDOT El Paso District, Jennifer Wright, al (915) 790-4200 al menos dos días hábiles antes del evento. Si usted tiene cualquier pregunta o desea discutir detalles del proyecto, por favor póngase en contacto con , Hugo Hernandez, directora del proyecto de TxDOT, al (915) 790-4200 o a través del correo electrónico Hugo.Hernandez@txdot.gov.



OUTREACH EVENTS

Tuesday, January 22
from 4:30 to 6:30 p.m.

Thursday, January 24
from 5:00 to 7:00 p.m.

Learn more on
the back page



HOW TO STAY INVOLVED

Learn about the planning process, get status updates, stay informed, and be involved.

Online and Email
www.ReimagineI10.com &
Public@ReimagineI10.com



Scan this QR code with your phone to go directly to the Project Website



QUESTIONS?

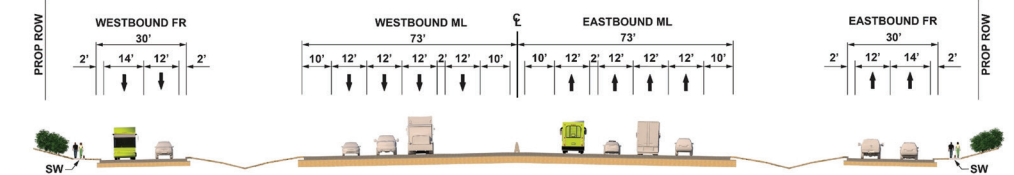
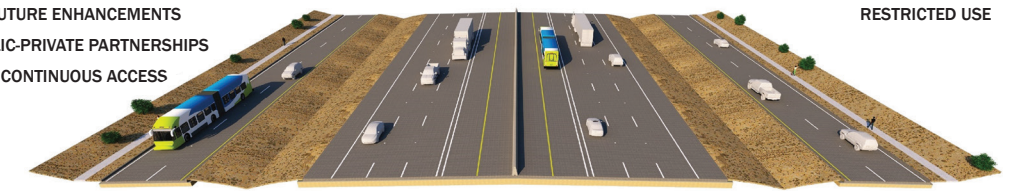
Project Managers
Hugo Hernandez, TxDOT
Hugo.Hernandez@txdot.gov
(915) 790-4200
Brian Swindell, P.E. HDR
Brian.Swindell@HDRinc.com
(972) 960-4400

REIMAGINE I-10

PROPOSED I-10 TYPICAL SECTION

Advantages

CAPACITY
NO RESTRICTIONS
FUTURE ENHANCEMENTS
PUBLIC-PRIVATE PARTNERSHIPS
CONTINUOUS ACCESS



Adaptive Lane - Buffer Separated

CONCEPTUAL

Disadvantages

RIGHT-OF-WAY
IMPROPER USE
RESTRICTED USE

FUTURE TRANSPORTATION TECHNOLOGY



ADAPTIVE LANE LIMITS

Adaptive lanes are proposed along the I-10 Corridor for Segments 1, 2 and 3, between Redd Road and Loop 375. Adaptive lanes along the corridor could respond to on-demand traffic needs.

ADAPTIVE LANE FEATURES



DATA COLLECTION
Data collection such as travel times, accidents and traffic volumes contribute towards maximizing adaptive lane technology.



ACTIVE TRAFFIC MANAGEMENT
Active traffic management (ATM) can increase peak hour capacity on busy corridors. It maximizes the efficiency of a corridor by adjusting to traffic conditions in real time.



DRONE PATHWAY
Drones stationed along the corridor could travel over the adaptive lane to aid with incident management and provide live streams of traffic.



INTERNET OF THINGS
Adaptive lanes can facilitate the exchange of useful information through the provision of sensors and 5G connectivity. The Internet of Things (IoT) is a valuable tool for improving both the safety and the efficiency of a corridor.



TRUCK PLATOONING
By providing vehicle to infrastructure (V2I) connectivity, the adaptive lanes will accommodate truck platooning. Truck platooning has the potential to increase the safety and efficiency of truck travel and would lower fuel consumption. Platooning is a concept that can also be applied to passenger and transit vehicles.

CONFIGURATION OPTIONS

TRUCKS AND TRADITIONAL VEHICLES



TRUCKS AND TRANSIT



TRANSIT AND AV/CV CARS

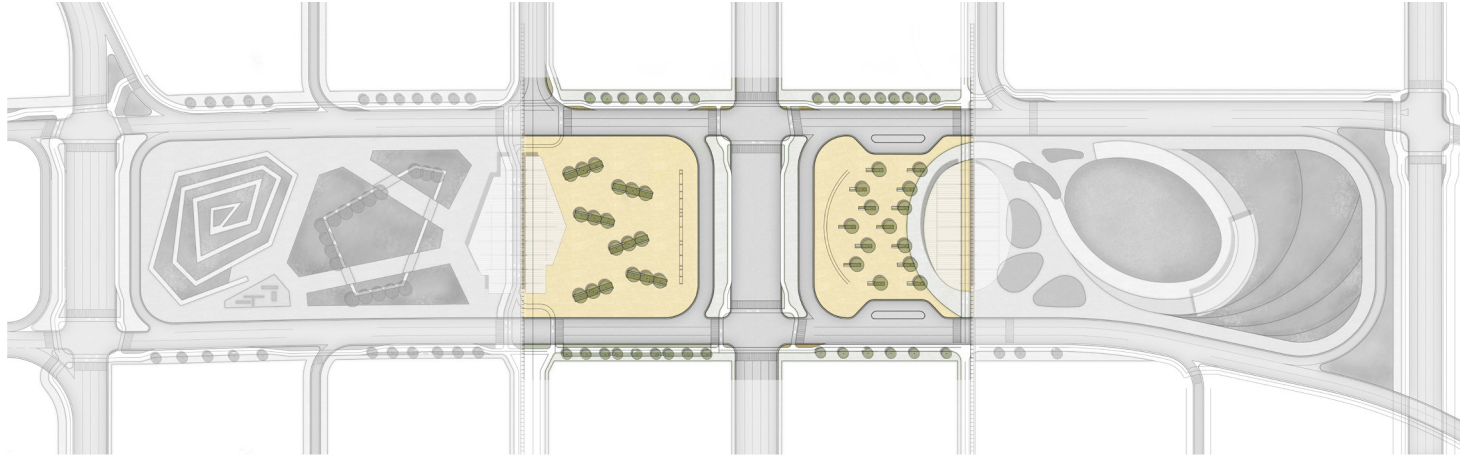




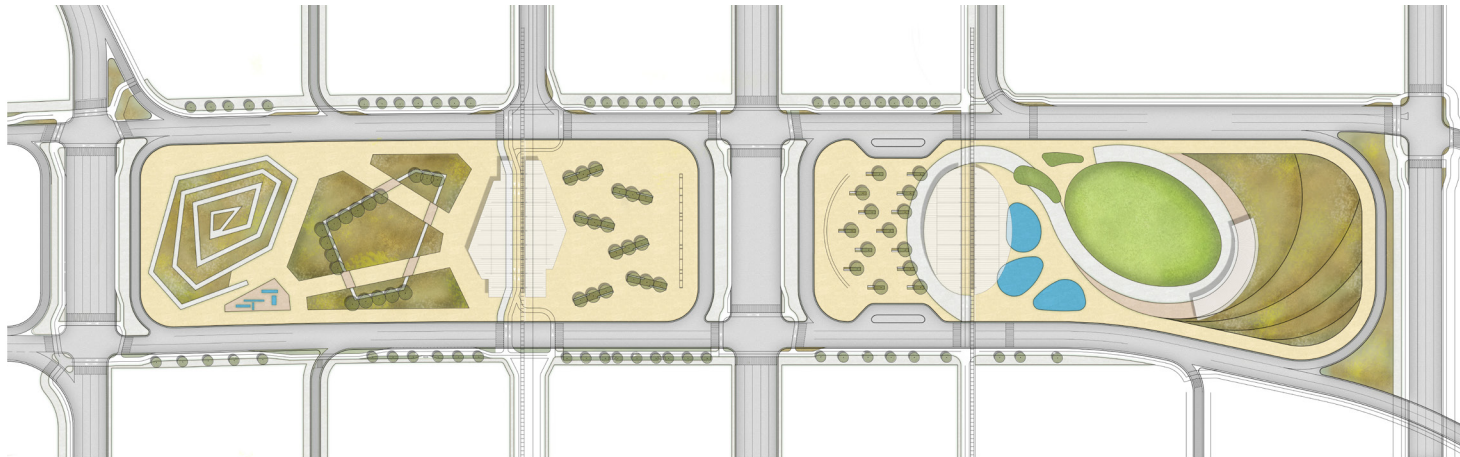
PROPOSED IMPROVEMENTS

DOWNTOWN*

PHASE I: BRIDGE BETWEEN N OREGON ST AND N STANTON ST*



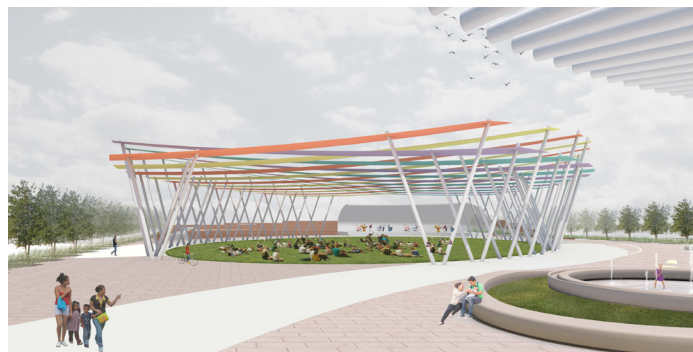
PHASE II: BRIDGE BETWEEN N SANTA FE ST AND N CAMPBELL ST*



BIKE/PEDESTRIAN IMPROVEMENTS*



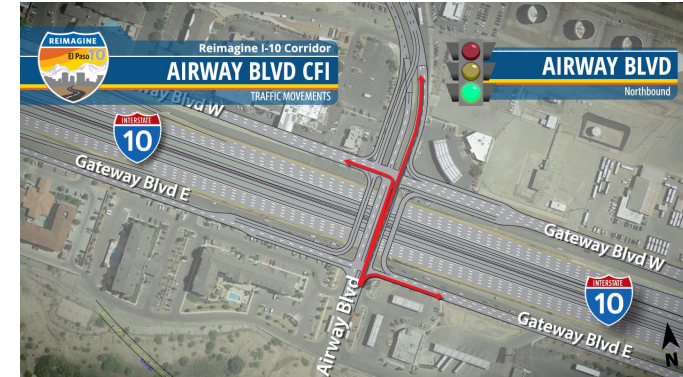
PERFORMANCE PAVILION*



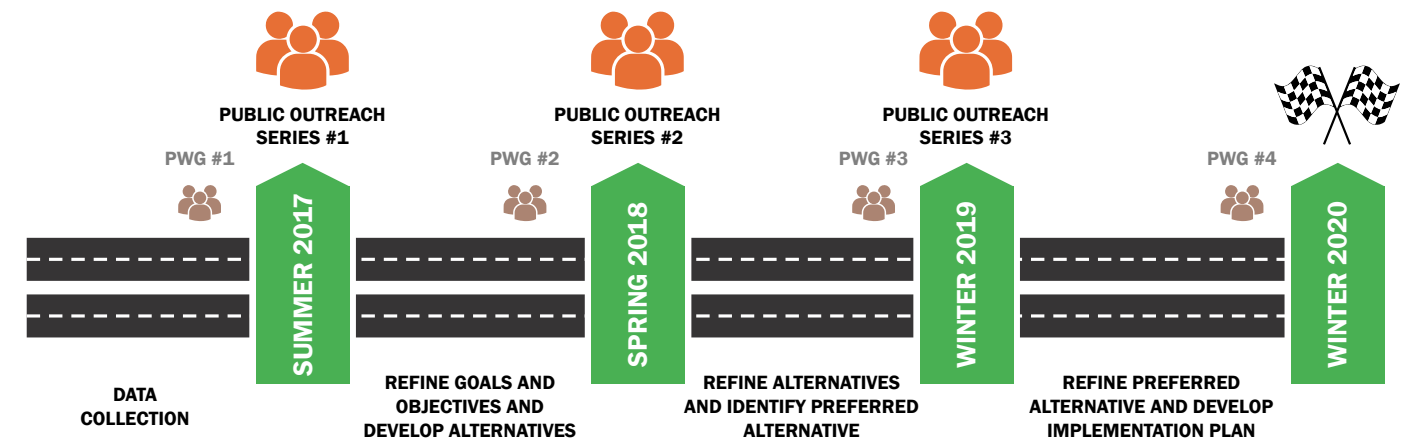
*DISCLAIMER: Amenities shown will require independent funding sources

INNOVATIVE INTERCHANGES

PROPOSED CONTINUOUS FLOW INTERSECTION AT AIRWAY BLVD



STUDY ROADMAP



HAVE QUESTIONS OR COMMENTS? VISIT US AT OUR OUTREACH EVENTS TO VIEW OTHER PROPOSED IMPROVEMENTS AND LEARN MORE!